



Seeing Trees Differently – *A Regional Planning Council's Perspective*

Travis Miller
OKI Regional Planning Manager

www.oki.org

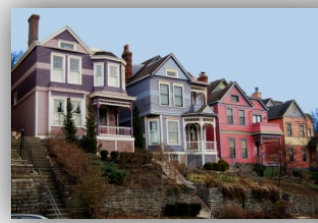


[/okiregional](https://www.facebook.com/okiregional)



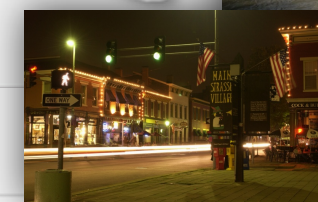
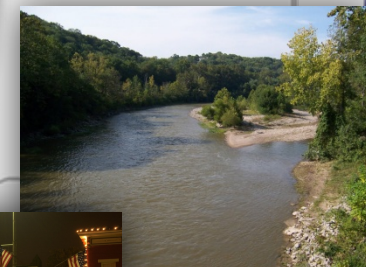
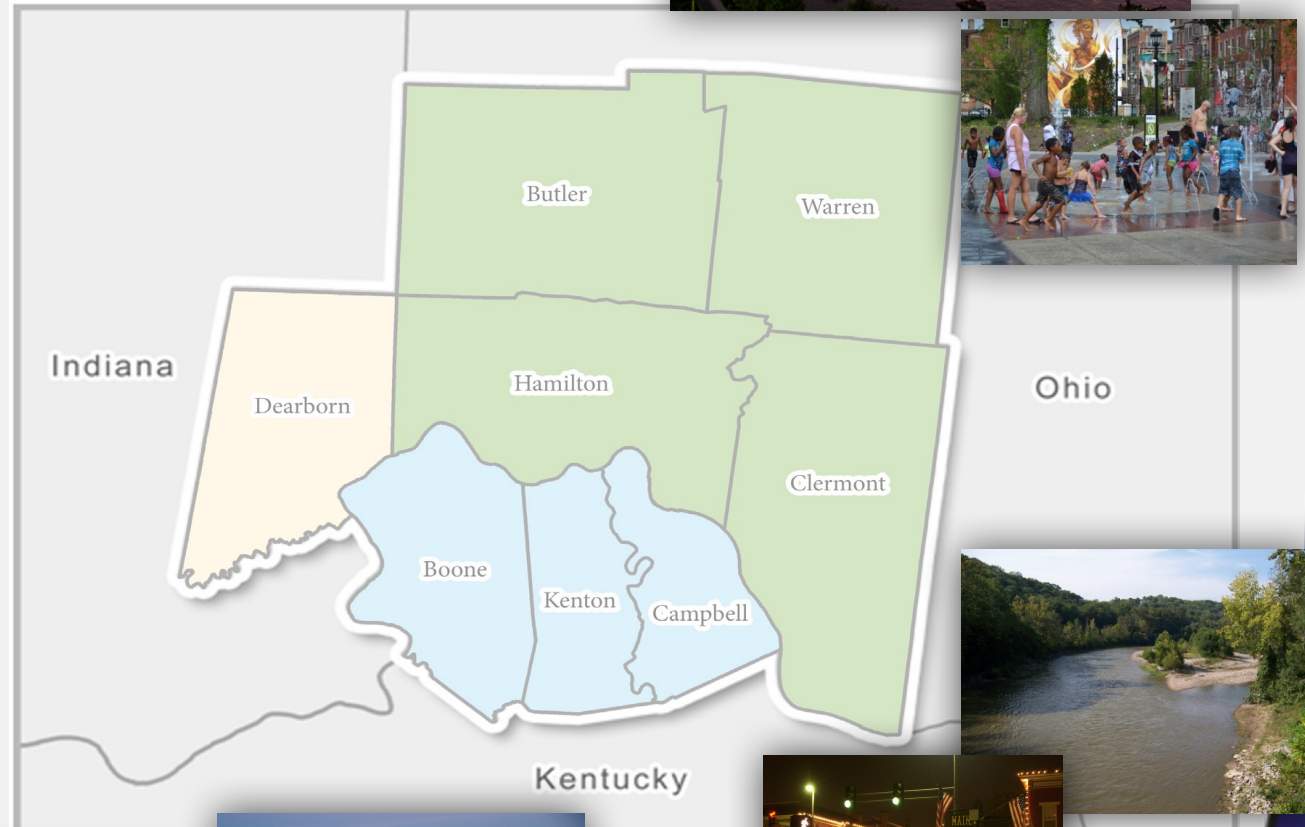
[/okircog](https://twitter.com/okircog)

OKI At a Glance



- 3 States
- 8 Counties
- 196 jurisdictions
- 118 member Board of Directors
- 2 Million residents
- 32 member staff

The OKI Region



www.oki.org

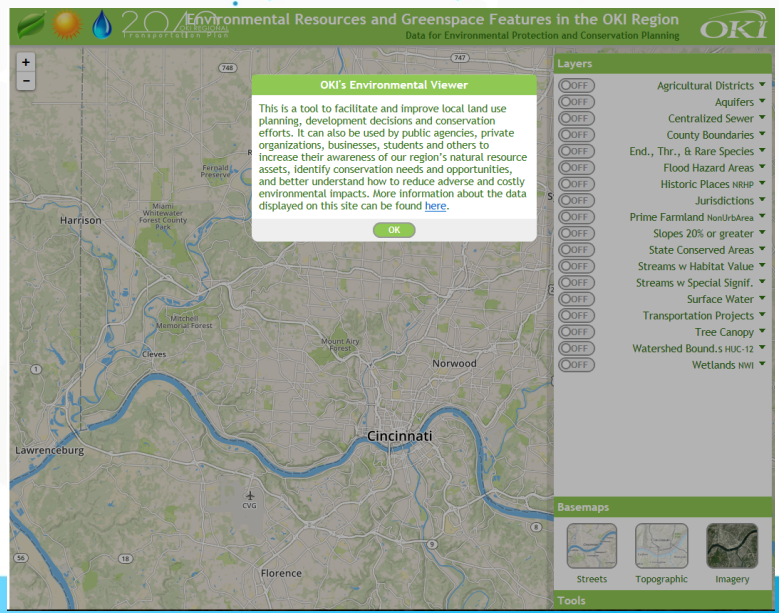
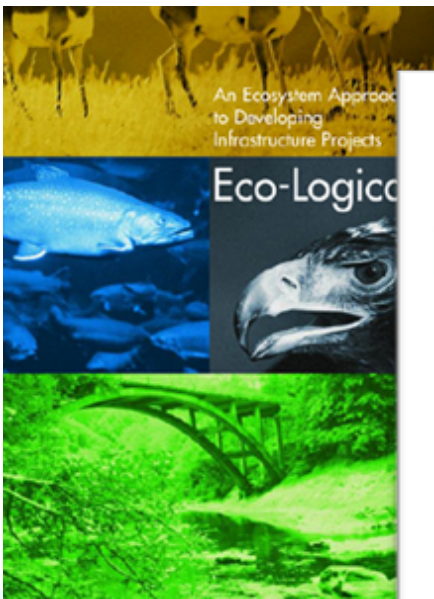


The OKI logo, featuring the letters 'OKI' in a stylized font with a blue swoosh above it.

Addressing Green Infrastructure and Regional Tree Canopy:



2040 OKI REGIONAL Transportation Plan *Moving the Region Forward*



Addressing Green Infrastructure and Regional Tree Canopy:

HOW do WE **GROW** From Here?
Strategic Regional Policy Plan



Transportation



Land Use



Natural Systems



Housing



Public Facilities



Economic Development

www.oki.org



/okiregional



/okircog

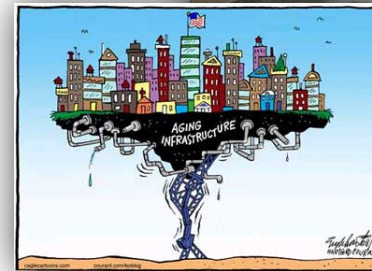


Areas of New Emphasis



– Public Facilities:

- *Stormwater Management*
- *Aging Infrastructure*



– Land Use:

- *Public Health and Community Development*



– Economic Development:

- *Quality of Life Assets*



Relative Densities of Tree Canopy in Butler, Clermont, Hamilton and Warren Counties, Ohio



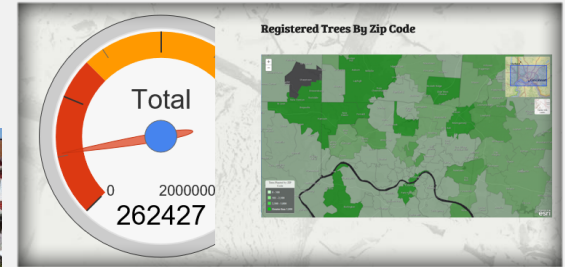
June 2014





Taking Root

A REGIONAL CAMPAIGN FOR REFORESTATION



**PLANTING 2 MILLION TREES
by 2020**

www.oki.org

 /okiregional

 /okircog





Working to address crisis confronting our trees

- Plant 2 million trees by 2020 – *a tree for everyone in the Region*
- Promote the many benefits of healthy trees
- Foster a sense of stewardship among individuals and communities.



www.takingroot.info



COMING SOON



Integrating Trees Into Stormwater Management Design and Policy

- A Guide for Local Decision Makers

www.treesandstormwater.org





Thank You

Travis Miller
tmiller@oki.org

www.oki.org



[/okiregional](https://www.facebook.com/okiregional)



[/okircog](https://www.twitter.com/okircog)